

NEW INTROS

B R O A D L O O M

JANUARY 2019

| NEW COLLECTIONS

| NEW STYLES

| NEW COLORS

Nourison

Nourtex



FEATURED STYLE : FELICITY 2

| COLOR : SWAN

| CUSTOM COLOR PROGRAM: MORE COLORS AVAILABLE ON PAGE 6

CONTENTS



5 **CARESS**
MACHINE TUFTED

10 **SEQUOIA**
MACHINE TUFTED

15 **STARLIGHT|STATIC**
WOVEN

21 **LUMIERE|AFTERGLOW**
WOVEN

27 **PERSPECTIVES|STONE PERSPECTIVES**
WOVEN

6 **FELICITY 2**
MACHINE TUFTED

11 **NEPAL|KATHMANDU**
WOVEN

16 **CRAFTWEAVE**
HAND-LOOMED

22 **LUMIERE|LATTICE**
WOVEN

28 **VELVET TEXTURES|VELVET ABSTRACT**
WOVEN

7 **FRONTIER**
MACHINE TUFTED

12 **NEPAL|POKHARA**
WOVEN

17 **TACOMA**
HAND-LOOMED

23 **LUMIERE|LATTICE RUNNERS**
WOVEN

29 **VELVET TEXTURES|VELVET STRIAE**
WOVEN

8 **HYANNIS**
MACHINE TUFTED

13 **NEPAL|RANGOUR**
WOVEN

18 **TERRAZA**
HAND-LOOMED

24 **RUSTIC TEXTURE|ABSTRACT MOSAIC**
WOVEN

30 **HOLLYWOOD**
HAND-LOOMED

9 **MAJESTY 2**
MACHINE TUFTED

14 **STARLIGHT|REFLECTION**
WOVEN

19 **TUNDRA**
HAND-LOOMED

25 **RUSTIC TEXTURE|RUSTIC VELVET**
WOVEN

31 **ORGANIC|ORGANIC TRELIS**
HAND-LOOMED

26 **PERSPECTIVES|PLAID PERSPECTIVES**
WOVEN

NOURISON

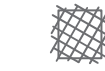


OUR PICK
+
our favorite new
broadloom style

HYANNIS COLLECTION

COLOR: NANTUCKET BLUE | PAGE 8

CARESS



100% Nylon



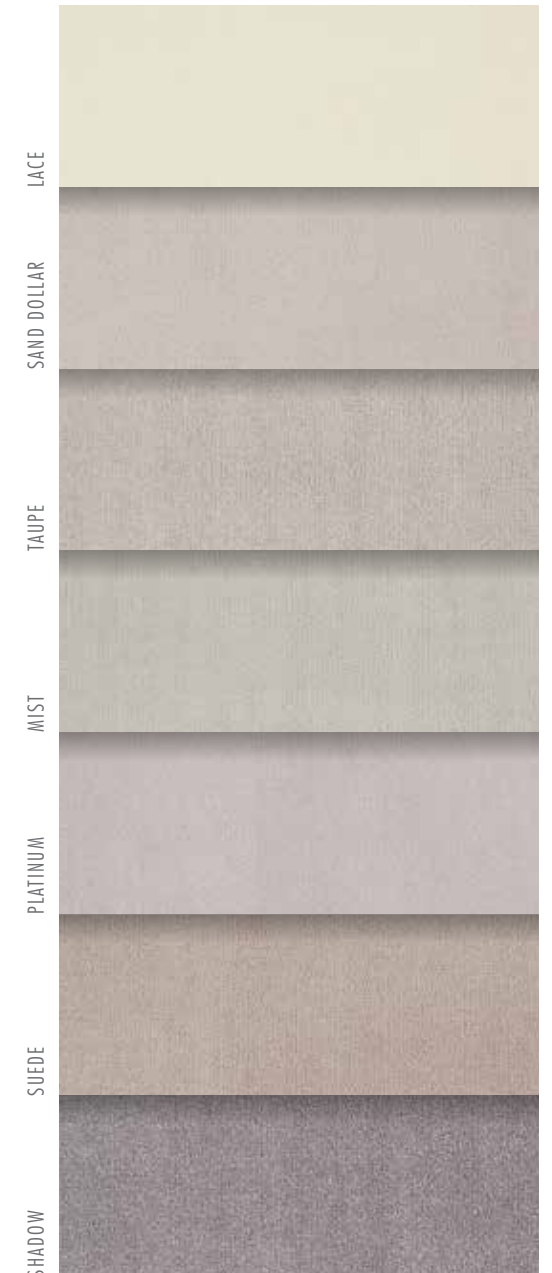
Machine Tufted



13'2" Width



Residential -
Light Commercial



CARESS | SUEDE

FELICITY 2



- 100% NZ Wool
- Machine Tufted
- 12' Width
- 3.5"W x 3.52"L
- Residential

FRONTIER

- 75% Wool
25% Nourlon™ Nylon
- Machine Tufted
- 12' Width
- 24"W x 12.7"L
- Residential -
Light Commercial



FELICITY 2 | SWAN



FRONTIER | HAZELNUT

HYANNIS

- 100% NZ Wool
- Machine Tufted
- 12' Width
- 12"W x 15.02"L
- Residential - Light Commercial



HYANNIS | NANTUCKET BLUE

MAJESTY 2



- 100% NZ Wool
- Machine Tufted
- 12' Width
- Residential



MAJESTY 2 | POTTERY



SEQUOIA



100% Wool



Machine Tufted



13'2" Width



Residential



SEQUOIA | DOVER



SEQUOIA | STRAW



OATMEAL

WALNUT

GRAVEL

GREY STONE

NEPAL

KATHMANDU



70% Wool
30% Luxcell



Woven



13'2" Width



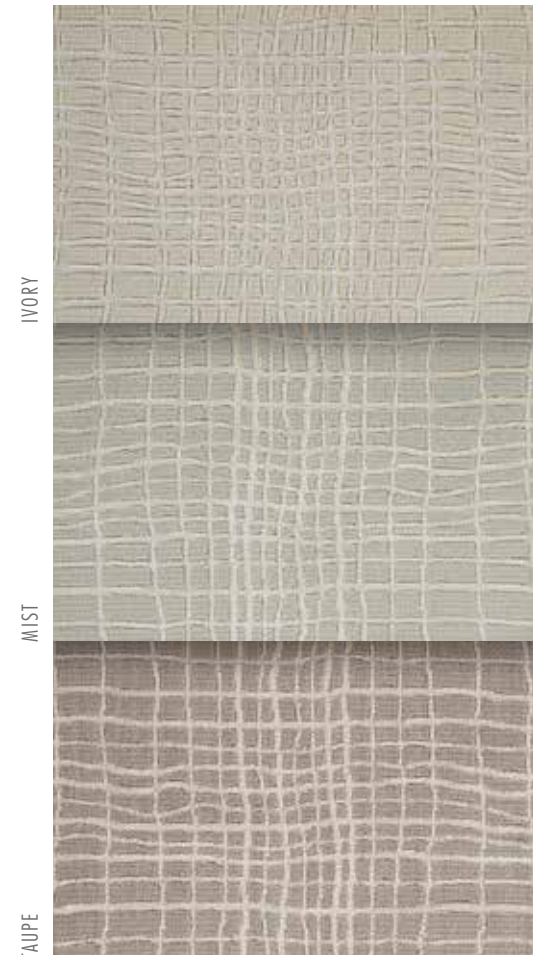
19.68"W x 19.68"L



Residential



KATHMANDU | IVORY



IVORY

MIST

TAUPE

NEPAL

POKHARA



70% Wool
30% Luxcelle



Woven



13'2" Width



9.84"W x 9.84"L



Residential



POKHARA | MIST

NEPAL

RANGOUR



70% Wool
30% Luxcelle™



Woven



13'2" Width



39.4"W x 31.9"L



Residential

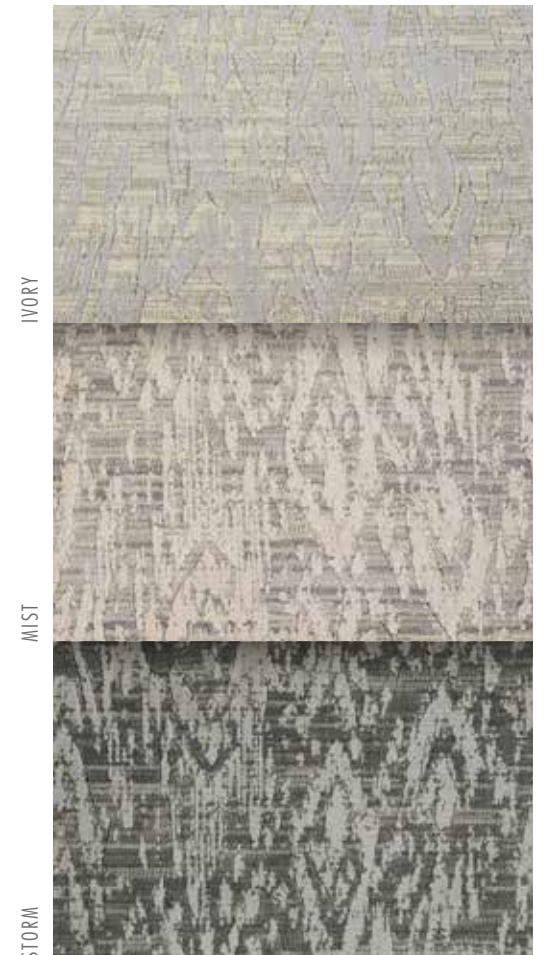


RANGOUR | STORM



IVORY

MIST




IVORY

MIST

STORM

STARLIGHT

REFLECTION


70% Wool
30% Luxelle Plus™


Woven


13' Width


8.6"W x 8.6"L



Residential



REFLECTION | STERLING

STARLIGHT

STATIC

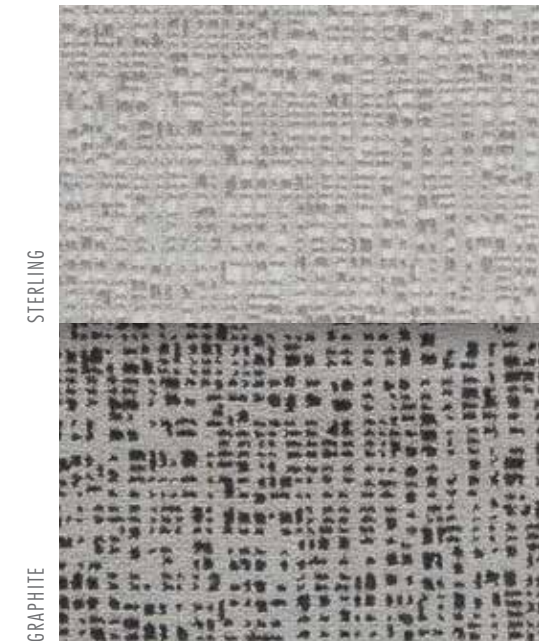

70% Wool
30% Luxelle Plus™


Woven


13' Width


19.6"W x 18.2"L


Residential



STATIC | STERLING

CRAFTWEAVE



30% Wool
70% Polysilk



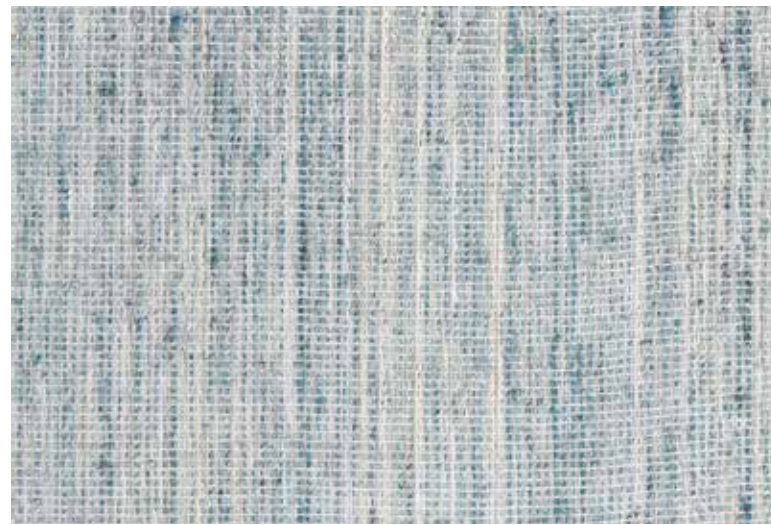
Hand-Loomed



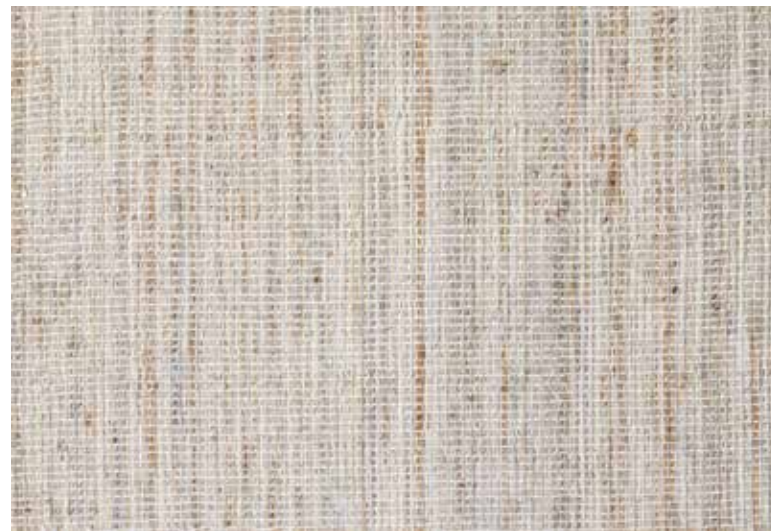
15' Width



Residential



CRAFTWEAVE | TEAL



CRAFTWEAVE | OAKWOOD

TACOMA



100% Wool



Hand-Loomed



15' Width



Residential -
Light Commercial



TACOMA | SKY



TACOMA | SMOKE



ASH



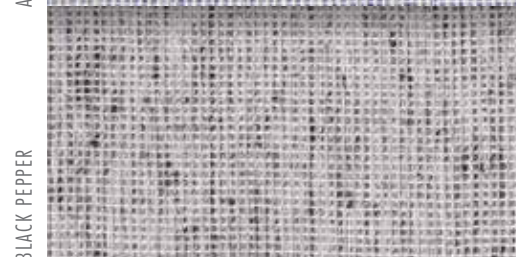
MARBLE



SPICE



AZURE



BLACK PEPPER



BIRCH



OATMEAL



COBBLESTONE



EARTH



MARINE

TERRAZA



100% Wool



Hand-Loomed



15' Width



Residential -
Light Commercial



TERRAZA | STRAW



TERRAZA | DENIM



TUNDRA



100% Wool



Hand-Loomed



15' Width



Residential -
Light Commercial



TUNDRA | QUARTZ



TUNDRA | PACIFIC



NOURTEX



RUSTIC TEXTURES COLLECTION

STYLE: ABSTRACT MOSAIC | COLOR: COBBLESTONE | PAGE 24

OUR PICK
+
our favorite new
Nourtex style

LUMIERE

AFTERGLOW


100% Polysilk


Woven


13'2" Width


39"W x 39"L

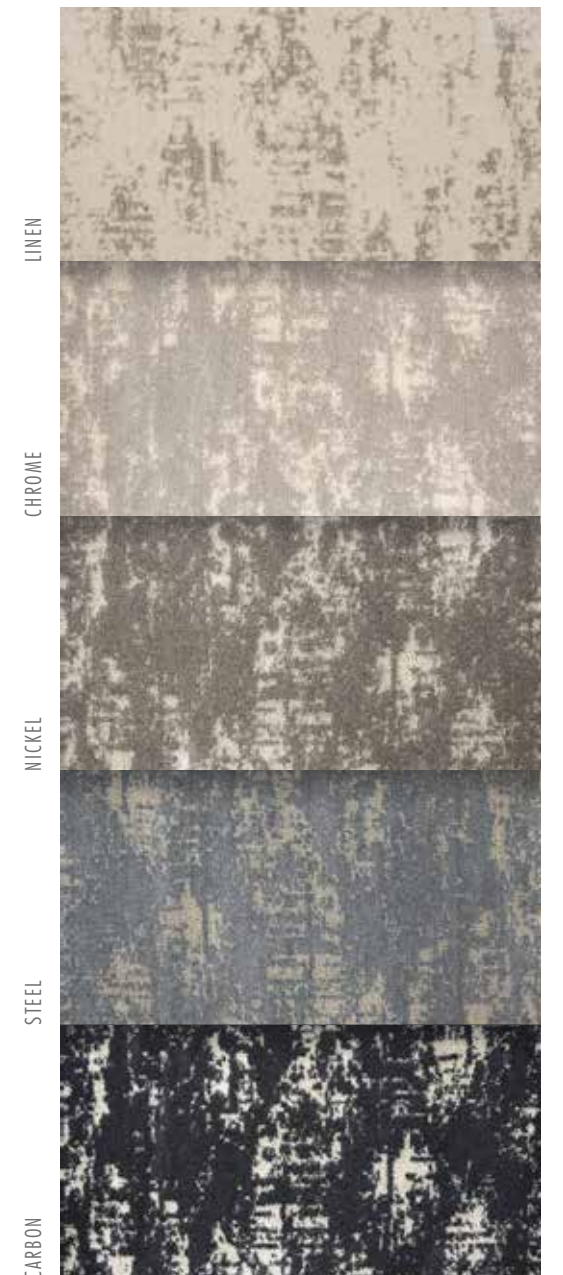

Residential



AFTERGLOW | BUFF



AFTERGLOW | AZURE BLUE



LINEN

CHROME

NICKEL

STEEL

CARBON

LUMIERE

LUMIERE LATTICE

- 100% Polysilk
- Woven
- 13'2" Width
- 12"W x 6"L
- Residential



LUMIERE LATTICE | LINEN



LUMIERE LATTICE | STEEL



LUMIERE

LUMIERE LATTICE RUNNERS

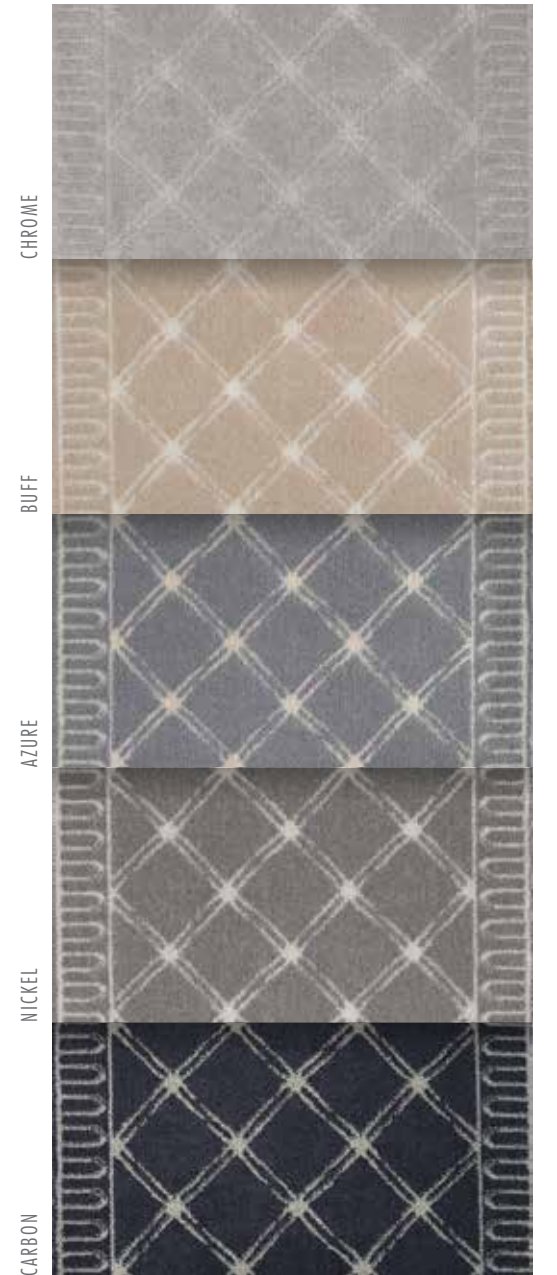
- 100% Polysilk
- Woven
- 27" Width
- 13"L
- Residential



LUMIERE LATTICE RUNNER | LINEN



LUMIERE LATTICE RUNNER | STEEL



RUSTIC TEXTURE

ABSTRACT MOSAIC

27" WIDE
RUNNERS
AVAILABLE

51% Polypropylene
49% Polyester

Woven

13'2" Width

39.37"W x 39.37"L

Residential



ABSTRACT MOSAIC | PEBBLESTONE



ABSTRACT MOSAIC | COBBLESTONE



SANDSTONE

RIPPLE

SLATE

RUSTIC TEXTURE

RUSTIC VELVET

51% Polypropylene
49% Polyester

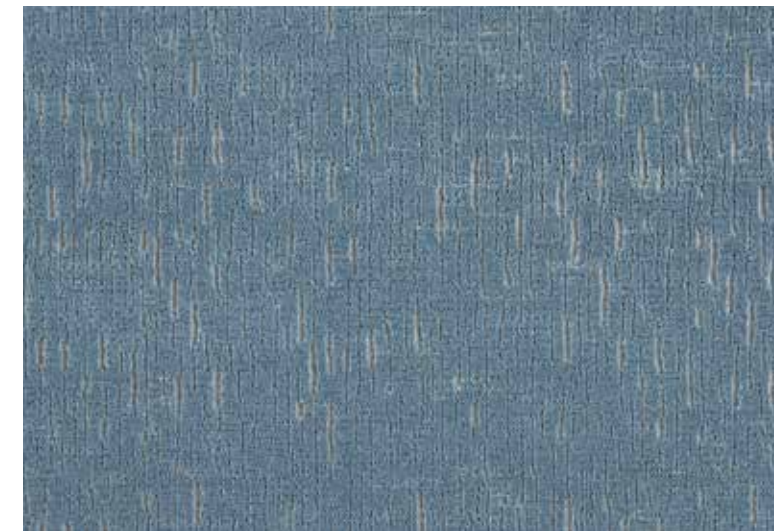
Woven

13'2" Width

Residential



RUSTIC VELVET | QUARTZITE



RUSTIC VELVET | RIPPLE



SANDSTONE

COBBLESTONE

SLATE

DENIM

PERSPECTIVES

PLAID PERSPECTIVES

 100% Polyester	 Woven	 13'2" Width	 13.12"W x 13.12"L	 Residential
---	--	--	--	--



PLAID PERSPECTIVES | IVORY BLUE



PLAID PERSPECTIVES | SILVER IVORY



IVORY BEIGE

BEIGE IVORY

BLUE IVORY

FLANNEL IVORY

PERSPECTIVES

STONE PERSPECTIVES

 100% Polyester	 Woven	 13'2" Width	 39.37"W x 39.37"L	 Residential
---	--	--	--	--



STONE PERSPECTIVES | HEARTHSTONE



STONE PERSPECTIVES | COBBLESTONE



SANDSTORM

SLATE

GRANITE

VELVET TEXTURES

VELVET ABSTRACT



70% NZ Wool
30% Nylon



Woven



13'9" Width



18.37"W x 16.54"L



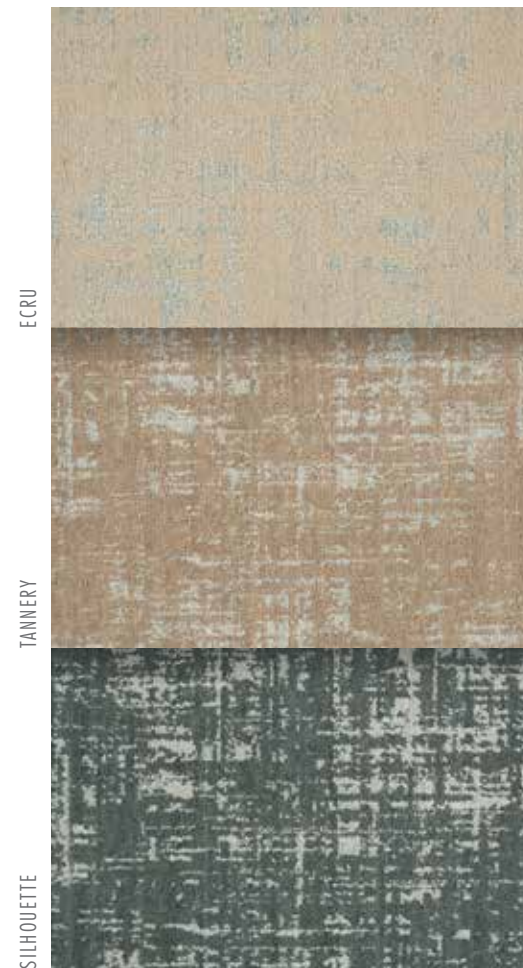
Residential -
Light Commercial



VELVET ABSTRACT | STONE



VELVET ABSTRACT | BLUE MIST



ECRU

TANNERY

SILHOUETTE

VELVET TEXTURES

VELVET STRIAE



70% NZ Wool
30% Nylon



Woven



13'9" Width



27.5"W x 17.58"L



Residential -
Light Commercial



VELVET STRIAE | ECRU



VELVET STRIAE | BLUE MIST



TANNERY

STONE

SILHOUETTE

HOLLYWOOD


30% Wool
70% Polysilk


Hand-Loomed


15' Width

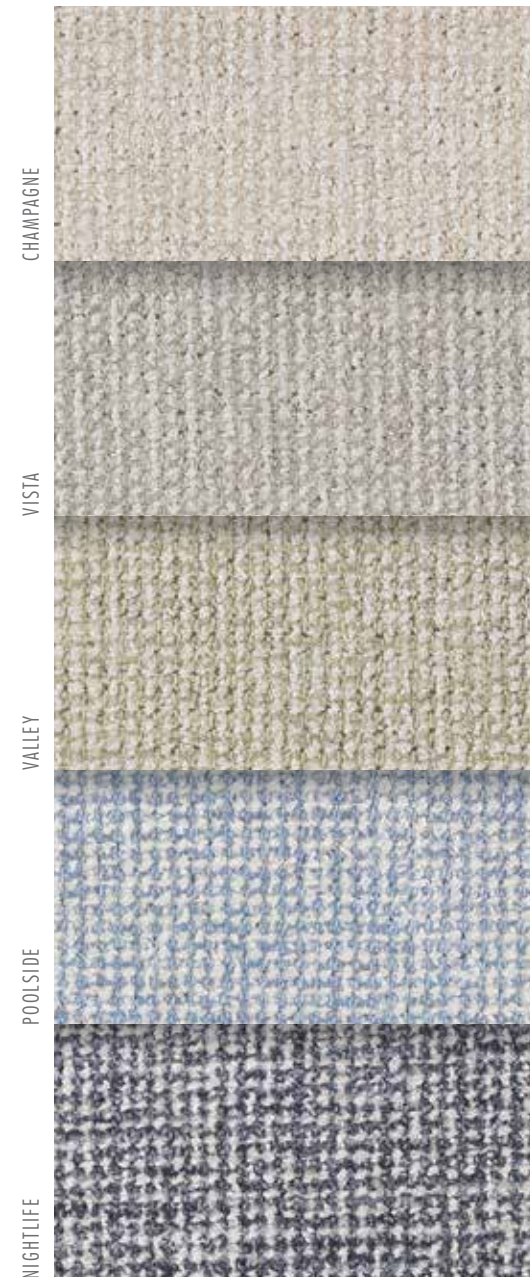

Residential



HOLLYWOOD | DERBY



HOLLYWOOD | STERLING



ORGANIC

ORGANIC TRELLIS


100% Wool


Hand-Loomed


15' Width


9.1"W x 26.49"L


Residential



ORGANIC TRELLIS | STONE



ORGANIC TRELLIS | FLANNEL



Nourison Industries, Inc., US Headquarters • 5 Sampson St., Saddle Brook, NJ 07663 • (800) 223-1110 • Fax (201) 368-0739

New York Showroom • 295 Fifth Ave. Suite 114, New York, NY 10016 • (212) 545-1030

Atlanta Showroom • Atlanta Merchandise Mart • 240 Peachtree St. NW, Space 1L1, 2, Atlanta, GA 30303 • (404) 584-7255

Las Vegas Showroom • World Market Center, Building C • 455 S. Grand Central Pkwy., Suite C112, Las Vegas, NV 89106 • (702) 454-2600

Highpoint Showroom • International Home Furnishings Center (IHFC) • 210 E. Commerce Ave., InterHall IH101 High Point, NC 27260 • (336) 841-6900

Nourison Europe • Freilagerstrasse 39, 8047 Zurich, Switzerland • (+41) 044 401 45 46/47 • Fax (+41) 044 401 45 48

NOURISON.COM | ©Nourison 2019 • v0119

